



**PATHFINDER SPECIALIST AWARD**



**SROBWG002 / SRONAV002**



**Demonstrate Bushwalking Skills**



**in Difficult and Trackless Areas /**

**Navigate in Difficult and**

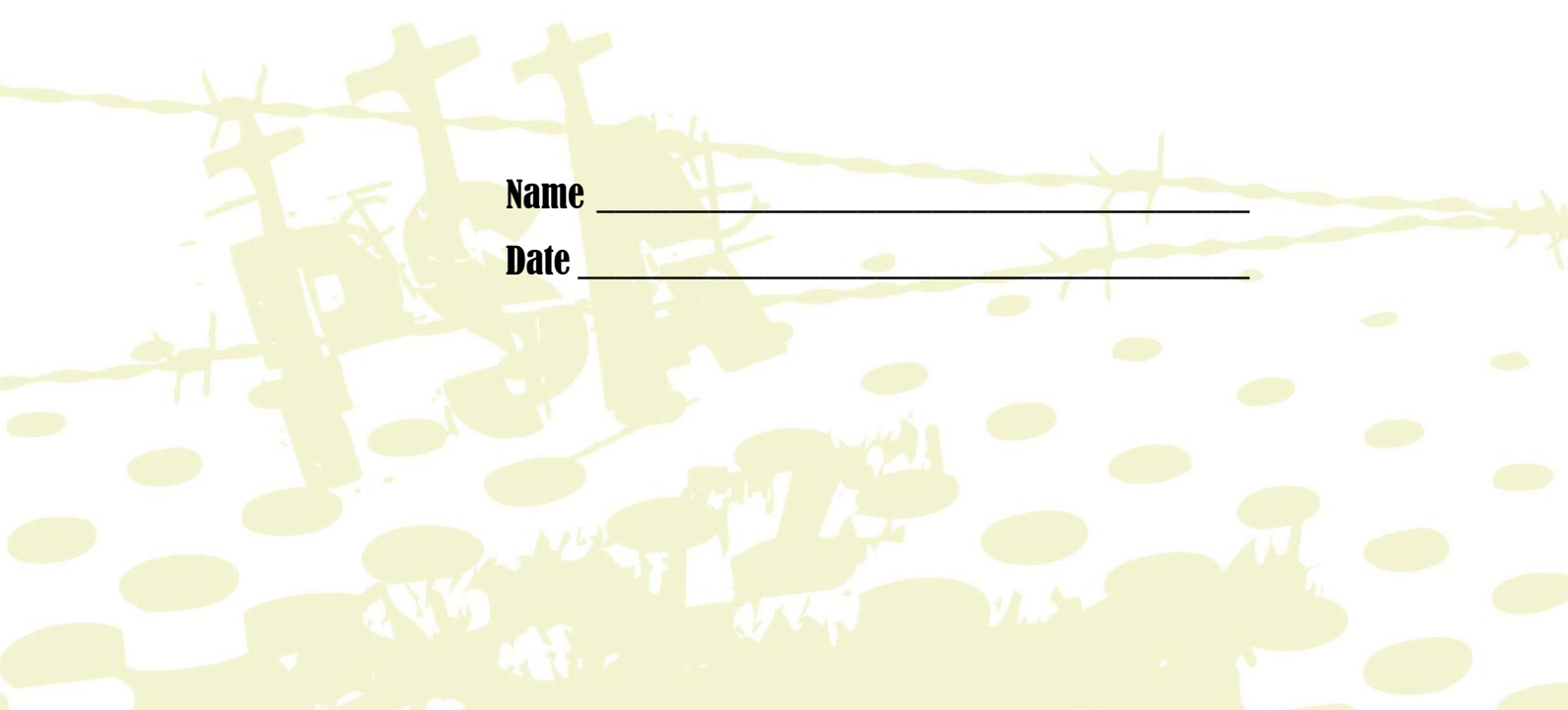
**Trackless Areas**

**Review Booklet**

**April 2010**

**Name** \_\_\_\_\_

**Date** \_\_\_\_\_



## Introduction

This Review Booklet has been designed to assess your knowledge of SROBWG002 Demonstrate Bushwalking Skills in Difficult and Trackless Areas and SRONAV002 Navigate in Difficult and Trackless Areas. It is essential that you read the Resource Material which you are required to know and understand in order to complete the Review Booklet. You may also draw on the Bible and your own personal experiences to complete this booklet.

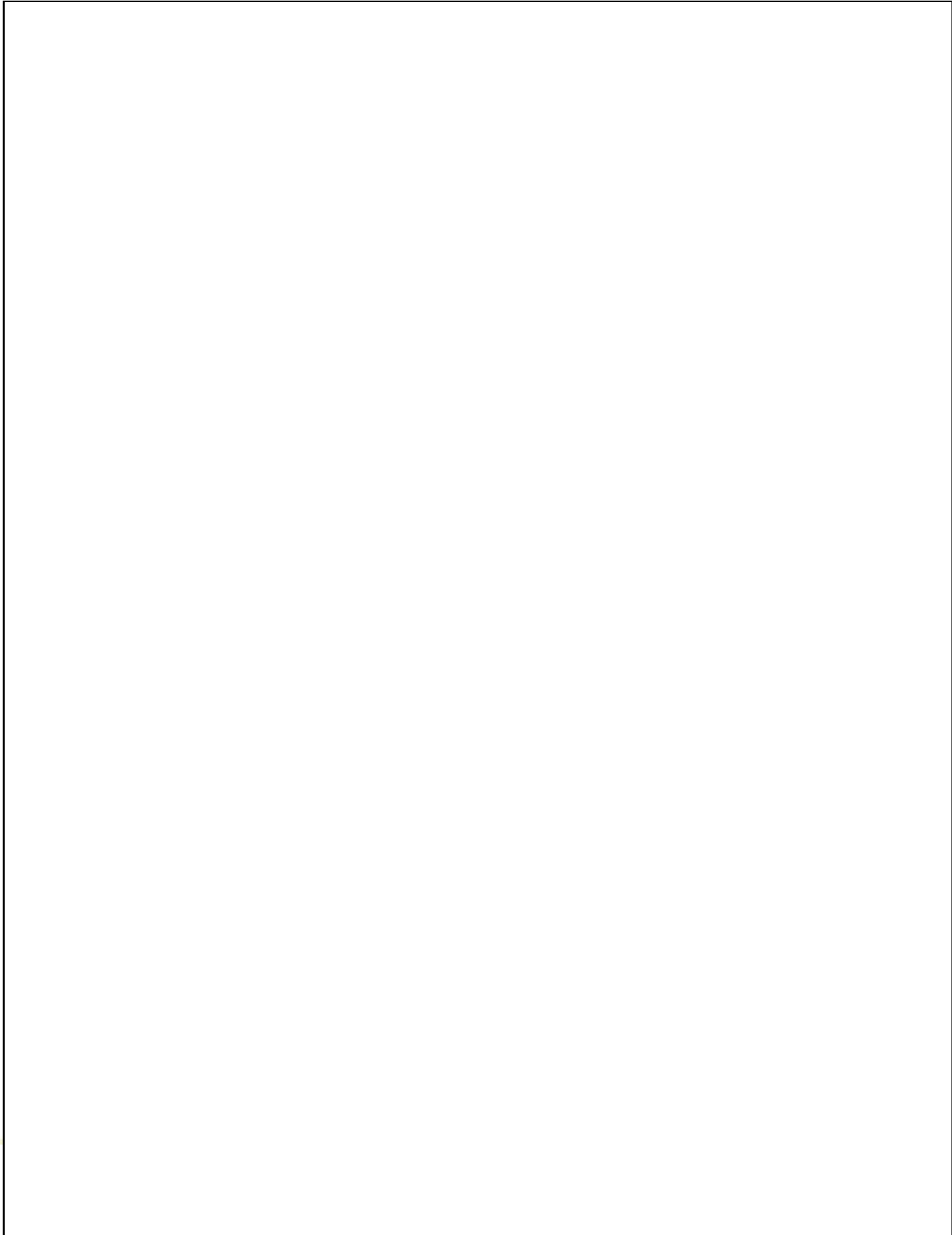
This Review Booklet must be completed before taking part in the assessment for this unit.

Note: If you have any questions, please consult your District Director or your local Conference/Mission Youth Department.

## Question 1

*(Resource Material: Chapter 1)*

Draw a diagram of how you would pack your pack for a 2-day bushwalk. Identify where you would pack various items.

A large, empty rectangular box with a thin black border, intended for the student to draw a diagram of how they would pack their pack for a 2-day bushwalk. The box is currently blank.

Explain your reasoning for packing this way \_\_\_\_\_

---

---

---

---

---

What guidelines are given for the weight of the pack? \_\_\_\_\_

---

---

---

---

What is your preferred method of putting your pack on and why? \_\_\_\_\_

---

---

---

---

---

What are the Occupational Health & Safety features of this method? \_\_\_\_\_

---

---

---

---

---

---

---

How would you waterproof the contents? \_\_\_\_\_

---

---

---

---

---

---

## Question 2

(Resource Material: Chapter 1)

Provide 5 of the most common hazards you may encounter when going bushwalking. Describe how to deal with them safely.

Hazard	Handling Method
1	
2	
3	
4	
5	

## Question 3

(Resource Material: Chapter 1)

List and describe 4 important river crossing techniques you have learned.

1. \_\_\_\_\_

\_\_\_\_\_

\_\_\_\_\_

\_\_\_\_\_

2. \_\_\_\_\_

\_\_\_\_\_

\_\_\_\_\_

\_\_\_\_\_

3. \_\_\_\_\_

\_\_\_\_\_

\_\_\_\_\_

\_\_\_\_\_

4. \_\_\_\_\_

\_\_\_\_\_

\_\_\_\_\_

\_\_\_\_\_

Have you ever been involved in a river crossing? \_\_\_\_\_

If yes, describe the situation and which technique you used? \_\_\_\_\_

\_\_\_\_\_

\_\_\_\_\_

\_\_\_\_\_

\_\_\_\_\_

## Question 4

(Resource Material: Chapter 1)

Describe the following terms in bushwalking.

Hypothermia \_\_\_\_\_

---

---

---

---

Hyperthermia \_\_\_\_\_

---

---

---

---

Heat Exhaustion \_\_\_\_\_

---

---

---

---

Phobia \_\_\_\_\_

---

---

---

---

## Question 5

Describe the ascending and descending techniques for steep slopes.

Ascending techniques \_\_\_\_\_

---

---

---

---

---

---

---

---

Descending techniques \_\_\_\_\_

---

---

---

---

---

---

---

---



## Question 6

(Resource Material: Chapter 1)

List the 5 most likely risks that you would have to consider when planning a bushwalk in your local area

Risk	Method of Minimizing
1.	
2.	
3.	
4.	
5.	

## Question 7

(Resource Material: Chapter 1)

As a leader, write up '10 hiking with a group rules' you could apply to a group going hiking.

Rule	Reason
1.	
2.	
3.	
4.	
5.	
6.	
7.	
8.	
9.	
10.	

## Question 8

(Resource Material: Chapter 2)

What type of map is most commonly used for bushwalking? \_\_\_\_\_

Why? \_\_\_\_\_

\_\_\_\_\_

\_\_\_\_\_

\_\_\_\_\_

\_\_\_\_\_

What other types could be useful? \_\_\_\_\_

\_\_\_\_\_

\_\_\_\_\_

\_\_\_\_\_

List at least 3 sources of error and inaccuracy on a map:

1. \_\_\_\_\_

\_\_\_\_\_

\_\_\_\_\_

2. \_\_\_\_\_

\_\_\_\_\_

\_\_\_\_\_

3. \_\_\_\_\_

\_\_\_\_\_

\_\_\_\_\_

\_\_\_\_\_

\_\_\_\_\_

## Question 9

(Resource Material: Chapter 2)

Complete the table by providing the description of each of the terms listed.

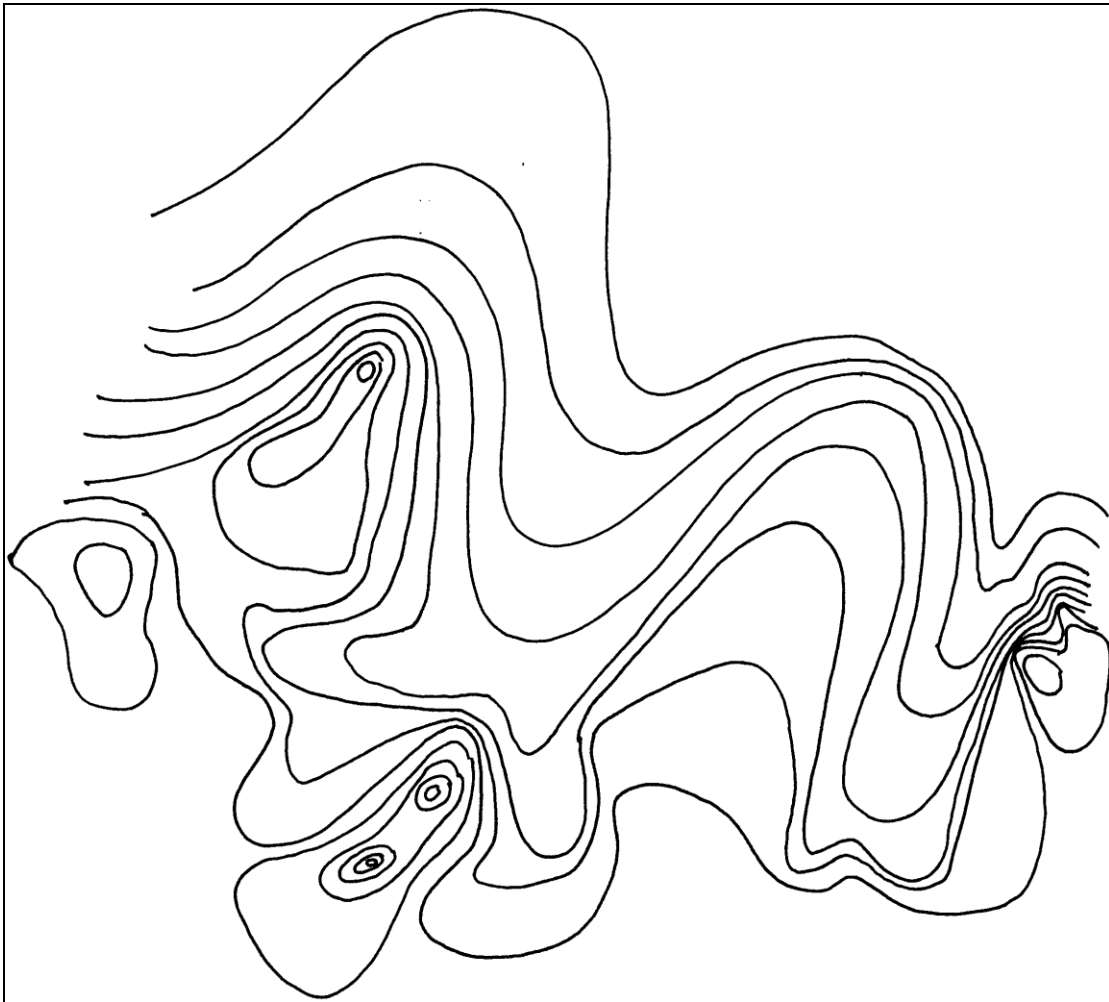
Information on a map	Description
Scale	
Map name	
Map number	
Date	
Contour	
Grid reference method	
Details concerning north	
Legend	

## Question 10

(Resource Material: Chapter 2)

Identify the following features on the topographical map provided.

1. Highest hill top
2. Valley
3. Cliff
4. Pass
5. Convex slope
6. Concave slope
7. Steep climb
8. Knoll



# Question 11

(Resource Material: Chapter 2)

Carry out the following tasks on the graph provided.

1. List the rest of the Eastings, if the lowest is 52
- 

2. List the rest of the Northings if the lowest is 73
- 

3. Identify where the follow grid references are on the grid below.

- a. 540780
- b. 574746
- c. 537777
- d. 562758

79								
78								
77								
76								
75								
74								
73	52	53	54	55	56	57	58	59

## Question 12

(Resource Material: Chapter 2)

Describe the following terms used when working with a compass:

Back bearing \_\_\_\_\_

---

---

---

Site bearing \_\_\_\_\_

---

---

---

Direction of travel arrow \_\_\_\_\_

---

---

---

Orienteering arrow \_\_\_\_\_

---

---

---

Index line \_\_\_\_\_

---

---

---

Travelling on a bearing \_\_\_\_\_

---

---

---

Magnetic north \_\_\_\_\_

---

---

---

True north \_\_\_\_\_

---

---

---

Grid north \_\_\_\_\_

---

---

---



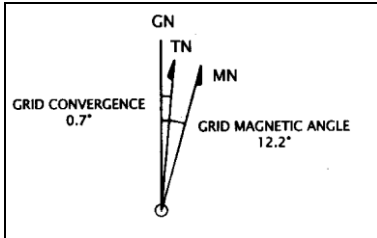




# Question 14

(Resource Material: Chapter 2)

Based on the diagram below, complete the following questions:



Grid North is: \_\_\_\_\_ degrees West off Magnetic North

True North is: \_\_\_\_\_ degrees East off Grid north

Magnetic bearing is: \_\_\_\_\_ degrees North

How would the bearing for grid north be established? \_\_\_\_\_

---

---

How would the bearing for true north be established? \_\_\_\_\_

---

---

List what could affect the accuracy of a compass? \_\_\_\_\_

---

---

---

---

---

---

---

---

---

---

## Question 15

(Resource Material: Chapter 4)

On the topographical map (next page), please mark in the following features:

1. The rivers
2. The lowest point on the map
3. The highest point on the map

The lowest point is 20 metres and the contour lines are spaced at 20 metres. Your Pathfinder unit is having a special adventure and a helicopter is dropping them off at 069580 at 2.30pm. You and your unit must be ready to meet the pickup transport at 963529 by 4.00pm the following day.

4. Fill out the Navigational Data Table on page 21.
5. Mark the drop-off and pick-up location on the map.
6. Name the features of the terrain that will be important for navigating.

---

---

---

7. List the personal equipment that the unit would have to bring.

---

---

---

8. Outline the emergency escape route.

---

---

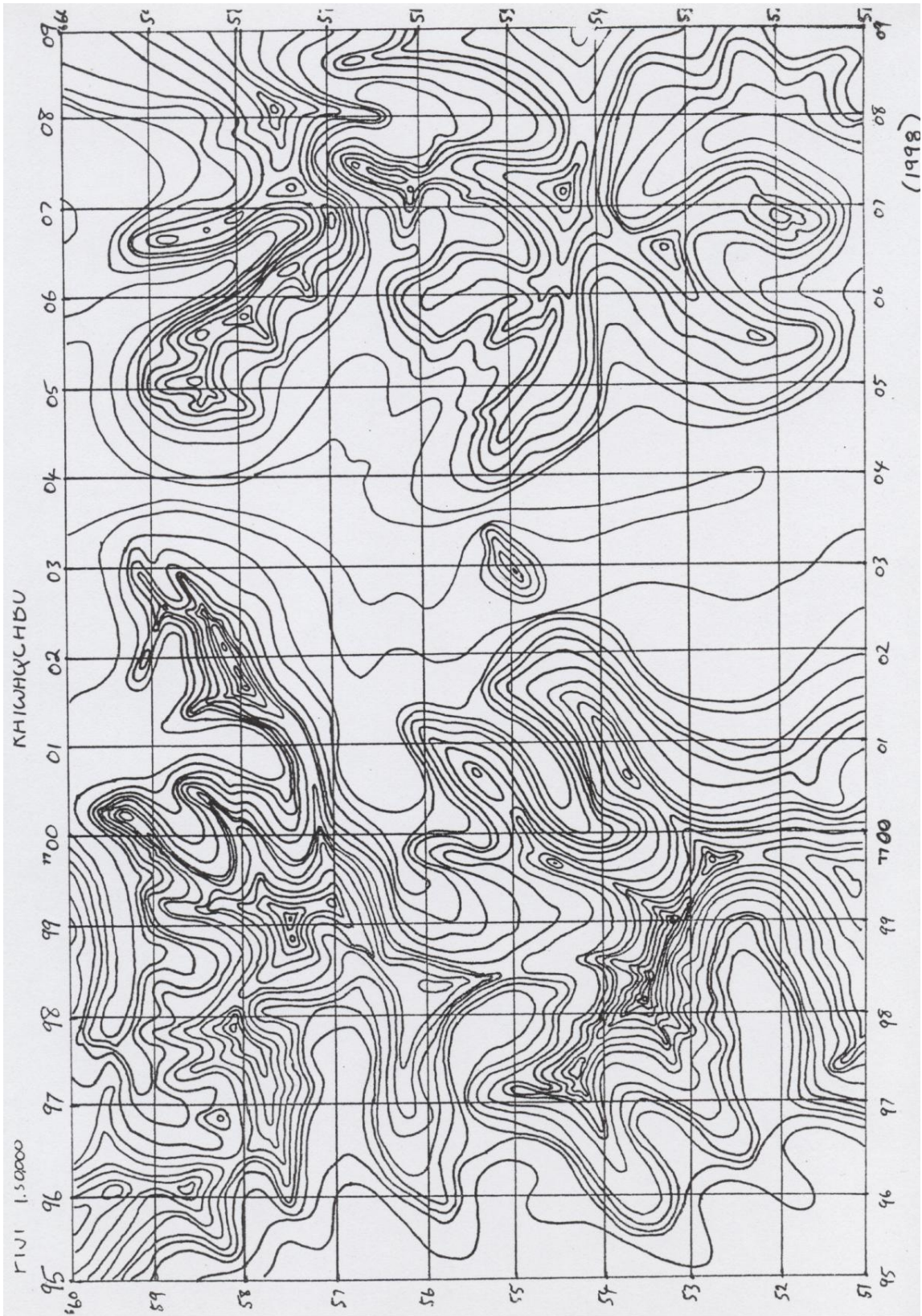
---

9. Outline what you think may be the environmental impact of the route you have planned.

---

---

---







## Question 16

(Resource Material: Chapter 4)

Define the following navigational terms?

Linear features \_\_\_\_\_  
\_\_\_\_\_  
\_\_\_\_\_

Aiming off \_\_\_\_\_  
\_\_\_\_\_  
\_\_\_\_\_

Collecting features \_\_\_\_\_  
\_\_\_\_\_  
\_\_\_\_\_

Hand rails \_\_\_\_\_  
\_\_\_\_\_  
\_\_\_\_\_

Resection \_\_\_\_\_  
\_\_\_\_\_  
\_\_\_\_\_

Attack points \_\_\_\_\_  
\_\_\_\_\_  
\_\_\_\_\_

Point features \_\_\_\_\_  
\_\_\_\_\_  
\_\_\_\_\_



## Question 18

(Resource Material: Chapter 5)

Complete the table by outlining the advantage and disadvantages of the following methods of finding north or direction?

Method	Advantage	Disadvantage
GPS		
Quick stick sun method		
All day sun stick method		
Watch method		
Stars eg, Southern Cross		